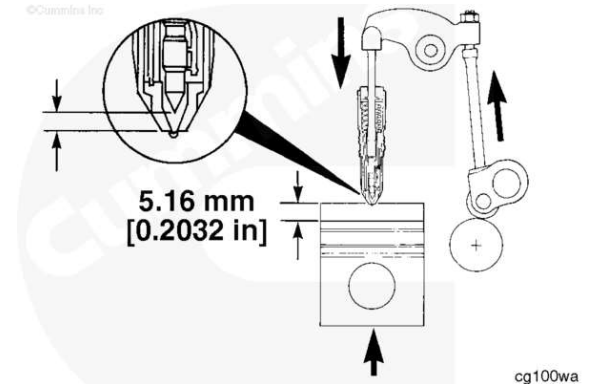


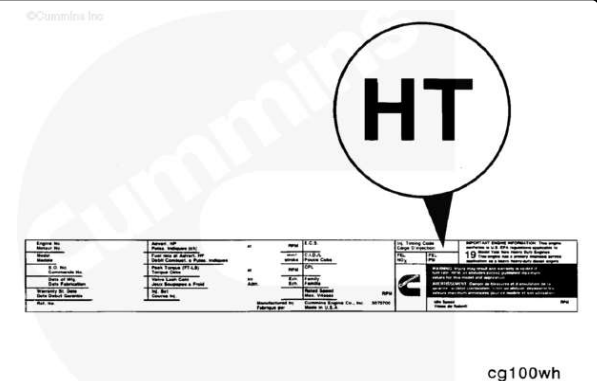
General Information

The static timing is relative to the amount of push tube travel remaining when the piston is 5.161 mm [0.2032 in], or 19 degrees before top dead center (TDC) on the compression stroke.



The static timing code appears on the engine dataplate. Codes are alphabetic letters that relate to a numerical specification.

Specifications can be found in the Control Parts List (CPL).



Advanced timing (1) means the fuel is injected earlier into the cylinder during the compression stroke. **Retarded** timing (2) means the fuel injection occurs closer to TDC in the cylinder.